

Echo Lakes - Barker Pass

Elevations	
Echo Lakes	7525 ft
Barker Pass	7650 ft
Highest / Dick's Pass	9380 ft
Lake Aloha	8120 ft
Dick's Lake	8500 ft
Richardson Lake	7550 ft

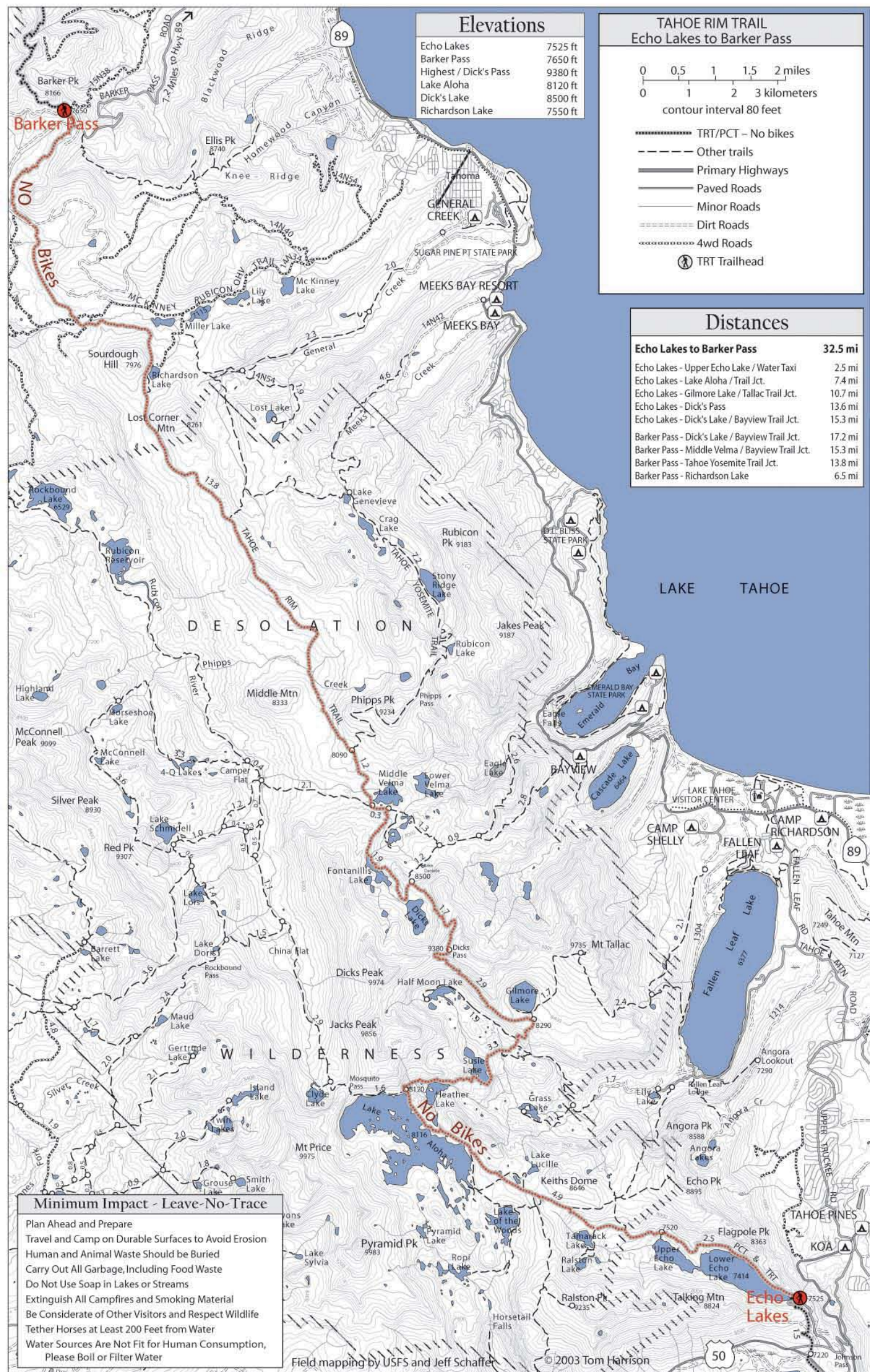
**TAHOE RIM TRAIL**  
 Echo Lakes to Barker Pass

0 0.5 1 1.5 2 miles  
 0 1 2 3 kilometers  
 contour interval 80 feet

- TRT/PCT - No bikes
- Other trails
- Primary Highways
- Paved Roads
- Minor Roads
- Dirt Roads
- 4wd Roads
- TRT Trailhead

**Distances**

Echo Lakes to Barker Pass	32.5 mi
Echo Lakes - Upper Echo Lake / Water Taxi	2.5 mi
Echo Lakes - Lake Aloha / Trail Jct.	7.4 mi
Echo Lakes - Gilmore Lake / Tallac Trail Jct.	10.7 mi
Echo Lakes - Dick's Pass	13.6 mi
Echo Lakes - Dick's Lake / Bayview Trail Jct.	15.3 mi
Barker Pass - Dick's Lake / Bayview Trail Jct.	17.2 mi
Barker Pass - Middle Velma / Bayview Trail Jct.	15.3 mi
Barker Pass - Tahoe Yosemite Trail Jct.	13.8 mi
Barker Pass - Richardson Lake	6.5 mi



**Minimum Impact - Leave-No-Trace**

- Plan Ahead and Prepare
- Travel and Camp on Durable Surfaces to Avoid Erosion
- Human and Animal Waste Should be Buried
- Carry Out All Garbage, Including Food Waste
- Do Not Use Soap in Lakes or Streams
- Extinguish All Campfires and Smoking Material
- Be Considerate of Other Visitors and Respect Wildlife
- Tether Horses at Least 200 Feet from Water
- Water Sources Are Not Fit for Human Consumption, Please Boil or Filter Water

Field mapping by USFS and Jeff Schaffer

©2003 Tom Harrison